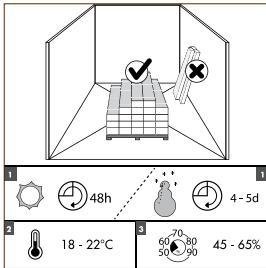


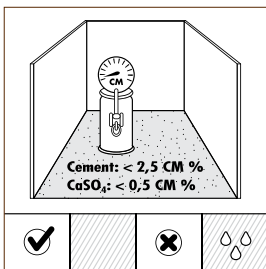
For best results, it is essential that you follow the installation instructions exactly.

PREPARATION

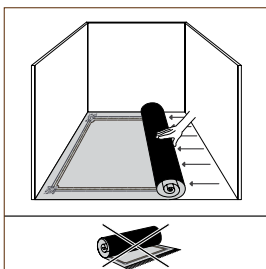


The floor has been dried beforehand to the optimum wood humidity level. For this reason, the flooring panels must be acclimatised in their packaging for a couple of days in the room where the wooden floor will finally be laid. In the summer this is for at least 48 hours and in the winter 4 to 5 days. This will enable the floor to adapt to the local conditions.

The best conditions for laying are a temperature of between 18 and 20 °C and a relative air humidity level of between 45 and 65%.



Fresh screed must dry for at least 1 week per cm thickness up to 4 cm and 2 weeks per cm thickness over 4 cm, with sufficient ventilation. For example, a 6 cm screed must dry for at least 8 weeks. For the thickness over 6 cm you must add 3 to 4 weeks. The moisture content must be less than 2.5% for cement-bound screed (CM method) and 0.5% for an anhydrite-bound screed.



In the case of gluing, the existing floor covering must be entirely removed. For floating floors, remove any damp-open floor covering (carpet, needle felt, etc) first. There is no need to remove existing damp-proof floor covering (PVC, Linoleum, etc). Always use an underlay. We recommend the use of a Quick • Step® underlay.

WOODEN SUBFLOOR:

Remove any existing floor covering first.

No signs of mould and/or insect infestations should be present.

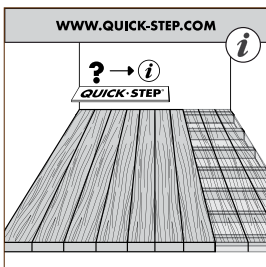
Make sure the subfloor is level. Nail down any loose parts.

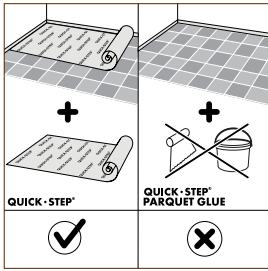
If your plank floor is on the ground level, lay a plastic foil first (Quick • Step® Screen).

Apply a levelling floor (Quick • Step® Softboard) on top of this. For a perfect subfloor preparation, it is recommended to lay a Quick • Step® underlay on top of the Softboard planks.

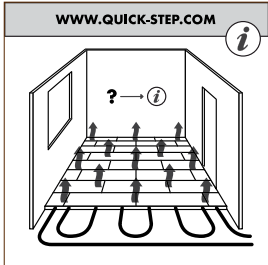
Install the new floor at ninety degrees to the existing subfloor.

The crawl space under the plank floor must be sufficiently ventilated. Remove any obstacles and make sure there is sufficient ventilation (minimum 4 cm² total ventilation openings per m² of floor). The moisture content of the wood must not exceed 10%.

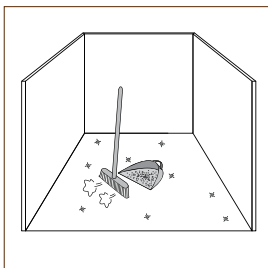




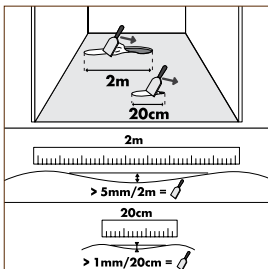
A new parquet floor can also be laid on top of an old tiled floor. In this case, the parquet should not be glued to the tiled floor, but laid 'floating'.



Additional instructions apply for floor heating. Click here for more information.



Make sure the floor base is flat, clean, firm and dry.

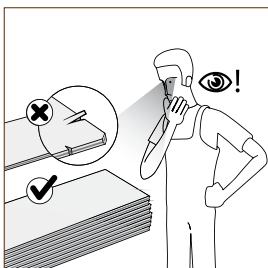


The subfloor may not contain any unevenness of more than 5 mm per 2 metres AND 1 mm per 20 cm. Larger irregularities must be evened out.

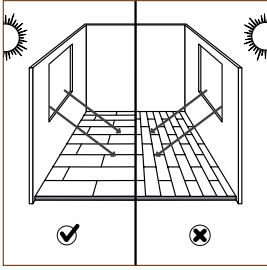
Check whether the old skirting-board can be removed. You can also leave the skirting on the wall and finish the floor with Quick • Step® profiles.

Check that the doors can still open and close after the floor and underlay have been installed (minimum + 1 cm).

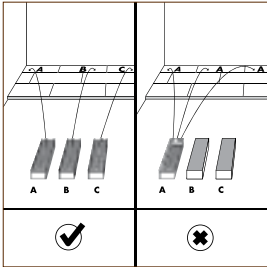
FOCUS POINTS



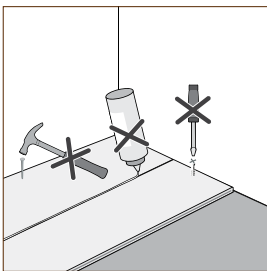
Inspect all planks in sufficient light before and during installation. Planks with visible defects must never be used.



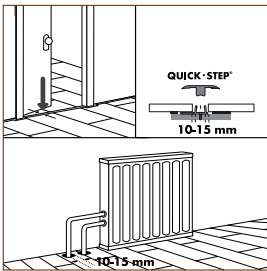
The floor should preferably be installed parallel to how the light enters the room (visually more attractive).



Wood is a natural product. The structure and colours in wood may vary. For this reason it is best to mix several boards from different packs when laying.

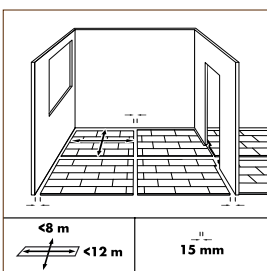


You can also choose a floating or full-surface gluing installation for the parquet floor. However, nailing or screwing the panels is not permitted. The panels can be clicked together easily thanks to the ingenious shape of the tongue and groove so glue is not necessary.



Wood is the main component of your Quick • Step® floor. Because room humidity can vary – for example, between summer and winter – it is vital that the floor is able to expand and contract. That's why you must leave an expansion joint on all sides of the floor of minimum 10 to 15 mm, also around pipes, under doors and at doorsteps. Remember that the floor may move in one direction.

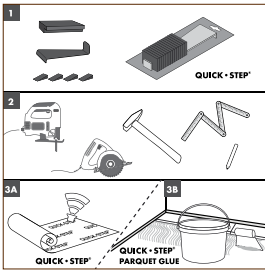
In any case, make sure there is an expansion joint between different rooms (under doors, for example). These expansion joints are sealed with a profile attached to the subfloor.



With lengths of more than 12 m and widths of more than 8 m, there should be an intermediate expansion joint. Expansion and contraction are linear, so the greater the surface area, the greater the tolerances need to be.

Uniclic® Multifit panels are not suitable for use in damp spaces like bathrooms and saunas.

INSTALLATION

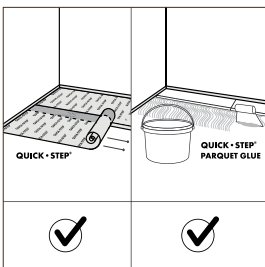


In addition to the standard tools (such as a hammer, saw, pencil, tape measure) for laying wooden floors, you will need the following accessories: installation kit (crowbar, spacers and special tapping block suitable for Uniclic®) - underlay system or parquet glue (we recommend Quick•Step® 'parquet glue') maintenance products

The use of accessories other than Quick•Step® accessories may cause damage to the Quick•Step® floor. In that case the warranty provided by Quick•Step® will be void. For this reason we would advise you to use only Quick•Step® accessories, which have been specially designed and tested for use with Quick•Step® floor panels.

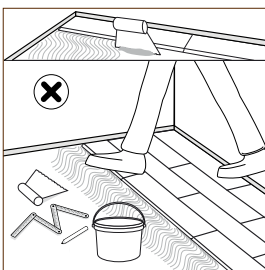
You can choose where you want to begin laying. Think about what will be the easiest way to install the floor. We will demonstrate the installation for right-handed people, from left to right. You can work in the other direction if you want.

Uniclic® Multifit is a revolutionary system for laying wooden floors. The panels can easily be clicked together, thanks to the ingenious shape of the tongue and groove. Uniclic Multifit is unique because you can lay the planks in three different ways. A. Click together at an angle of 20 - 30°. B. Press the short side down. C. Slide together horizontally (in difficult situations) with the Uniclic Multifit tapping block

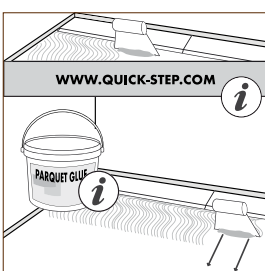


Quick•Step® Uniclic Multifit parquet can be laid with a floating installation or glued full-surface to the subfloor.

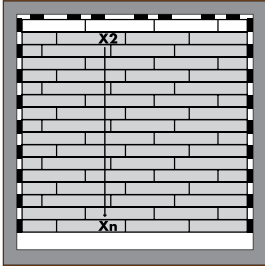
Direct gluing can only be done on a screed that is suitable for this (flatness, adhesion, cracks, etc.) in accordance with the general rules and best practices of the trade. The floor base must be sufficiently dry, hard and homogenous. The general laying instructions for Quick•Step® Uniclic Multifit parquet as described in this document apply here too. The same preparations must also be made (expansion joints, underlays, floor heating, etc.).



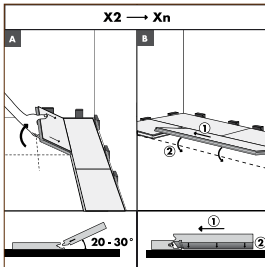
If you are gluing your floor, try to walk as little as possible on the glued section during laying.



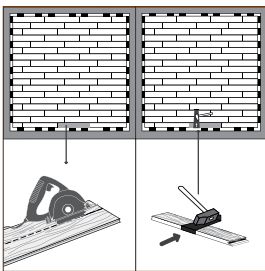
If you choose to glue your parquet floor, we recommend Quick•Step® "parquet glue". Please follow the information and advice of the glue manufacturer regarding drying time, consumption, glue comb, etc. These instructions can always be found on the glue container.



We continue with the instructions for the installation of the second to the last by one row.

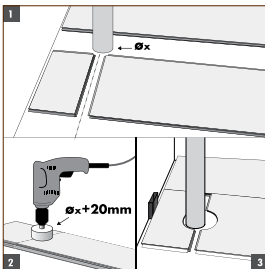


Click the first panel of the second row in the previous row. Then also tilt the second panel of the second row in the previous row while holding the panel at an angle of 20 - 30° and moving it against the first panel of the second row. Press the panel down (drop-down system) and the panels will engage automatically. This system is very practical when gluing the floor because it is no longer necessary to move the planks crosswise and glue cannot seep into the joints.

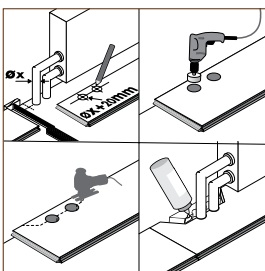


There must also be an 10 to 15 mm expansion joint between the last row and the wall. Keep this in mind when sawing the last row of panels. In places where it is difficult to lay the Uniclic Multifit planks with the tapping block (e.g. next to a wall), you can tap them together with the crowbar and a hammer.

OBSTACLES

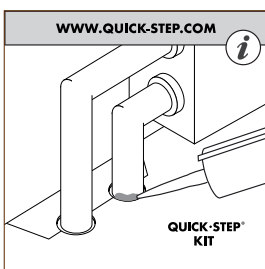


In rows where there is a pipe, make sure the pipe falls exactly in line with the joint between two panels. Take a drill bit with the same diameter as the pipe plus 20 mm. Click the panels together on the short side and drill a hole centred on the joint between the two panels. Now you can install the panels on the floor.

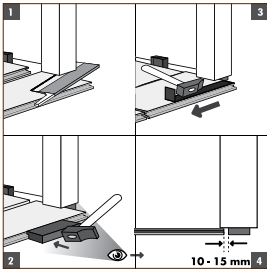


Proceed as follows:

1. Measure where the pipe will come through the plank. Don't forget to allow for the expansion joint.
2. Take a drill bit measuring the diameter of the pipe plus +20 mm for the expansion. Drill through the panel where the pipe will come through.
3. Extend the hole to the edge of the panel.
4. Lay the panel around the pipe.
5. Take another panel and saw a piece that fits exactly in the remaining hole, and glue this piece with wood glue.

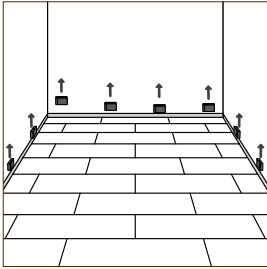


For a perfect finish around pipes, use Quick•Step® pipe covers or an elastic paste (Quick•Step® Kit).

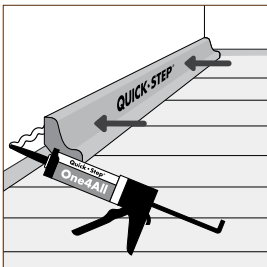


When sawing the panels ensure that the expansion joint under the door is at least 10 mm. If you cannot lift the panel, use an adapted tapping block or crowbar and hammer to tap the panels together.

FINISHING

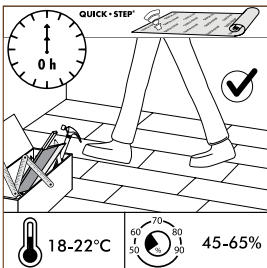


Remove all spacers.



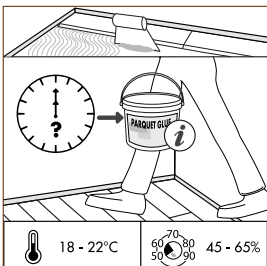
Install the skirting-boards on the plastic foil projecting upwards from the floor (floating installation). Never attach the skirting-boards to the floor. This allows the floor to expand and contract under the skirting-board. In places where profiles and skirting-boards cannot be fitted, fill expansion gaps with elastic paste (Quick•Step® Kit).

MAINTENANCE



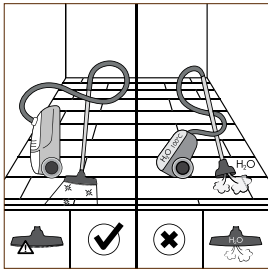
When laying a floating floor, you can walk on it during installation and immediately afterwards to finish off the floor.

After laying, maintaining a temperature of between 18 and 20 °C and a relative air humidity level of between 45 and 65 % is also important for a wooden floor. During the winter months, the air in a room is usually extremely dry. For this reason, it is best to place humidifiers on the radiators to obtain a constant humidity level. For large rooms, electric humidifiers will probably be necessary. In summer and autumn, when there is a high relative humidity, the room should be well ventilated.

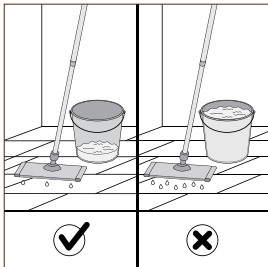


Please follow the information and advice of the glue manufacturer regarding drying time.

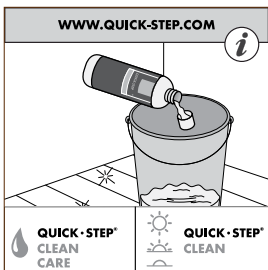
After laying, maintaining a temperature of between 18 and 20 °C and a relative air humidity level of between 45 and 65 % is also important for a wooden floor. During the winter months, the air in a room is usually extremely dry. For this reason, it is best to place humidifiers on the radiators to obtain a constant humidity level. For large rooms, electric humidifiers will probably be necessary. In summer and autumn, when there is a high relative humidity, the room should be well ventilated.



Dry maintenance is possible with Quick•Step® microfiber cloth or with a vacuum cleaner. Make sure it is equipped with soft wheels and a special parquet brush to avoid scratches on your floor. Never use a steam cleaner.



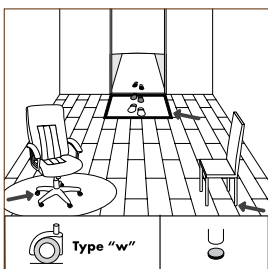
Wet maintenance is absolutely forbidden.



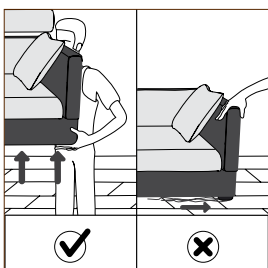
For slightly damp cleaning we recommend the Quick•Step® maintenance kit (see instructions for these products). Remember that using other cleaning products may damage your floor. Always wipe dry immediately until no more moisture is visible on the floor. Bevelled products must only be cleaned with a dry cloth. For our oiled wood floors we recommend using Quick•Step® Oil Care once in a while to prevent your floor from looking dried-out and dull. With the Quick•Step® Oil Care you will restore the original look of your floor. Always follow the instructions provided with the product carefully.



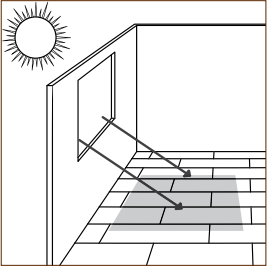
Remove any water immediately.



Protect furniture and chair legs with strong felt caps. Avoid bringing dirt, water and sand indoors by providing a suitable floor mat at the door. Use (office) chairs and seats with soft casters Type W (EN 12590) that are suitable for a laminate floor and/or use a suitable desk mat.



Lift furniture and never drag it over the floor.



As with any natural product, sunlight can cause colour variations in the wood's surface.
